

Stock Number: 459866

Model: 437E Serial Number: 1T0437EDVNF429448

### EVAL INSPECTION — ADVANCED — FORESTRY KNUCKLE BOOM LOADERS

2022 John Deere 437E  
Stock: 459866  
Serial: 1T0437EDVNF429448  
Cab w/ AC • 360° Rotating Head • w/ Heel • Aux Hydraulics •  
Delimber • Grapple • Slasher/Swing Boom • Trailer Mounted  
Warranty Available

STORAGE LOCATION  
**Dobbs Equipment Southeast, LLC / 177357**  
West Columbia, SC, 29169  
Contact:

### PHOTOS (27 Total)



### SUMMARY

**Overall Condition:** GOOD  
**Overall Comments:** Machine is in good condition overall. Machine is in good mechanical and cosmetic condition. No significant issues seen.  
**Evaluator's Name:** Brian Nielson  
**Operated Machine:** Yes  
**Hours:** 4,427

	E X C	G O O D	A V G	F A I R	P O O R	N / A	Comments	Estimated Cost		
								Parts	Labour	Total
General Appearance		X					Good condition. Machine looks good cosmetically.	0	0	0
Instruments / Controls		X					Good condition. Controls and gauges work properly.	0	0	0
Cooling System Checks		X					Good, no leaks or issues seen.	0	0	0
Engine Checks		X					Starts easy and runs good. PSI hot (32-76)	0	0	0
Transmission Checks						X	N/A	0	0	0
Differential, Brakes and Final Drive Checks		X					Not tested, presumed service & park brakes operate properly.	0	0	0
Hydraulic System Checks		X					Good condition. Machine is dry, everything operates properly	0	0	0
Chassis and Frame Checks		X					Pins are good minimal wear only. Good cond. structurally.	0	0	0
Tyres/Rims		X					Tires are look good.	0	0	0
Forestry Heads & Attachments		X					Grapple and Delimber in good condition. No issues seen.	0	0	0

Stock Number: 459866

Model: 4375 Serial Number: 1T0437EDVNF429448

**ATTACHMENTS**

Item	Make	Type	Size	Serial Number	Condition
Delimber	CSI	496	n/a	4962208313	Good
Grapple	John Deere	Bypass Log Grapple	52"	X000121	Good
Other	Big John Trailer	Kodiac Hyd. loader trailer.	148LTDK	1B9MC4823NF105388	Good

**GENERAL APPEARANCE**

	NEW	GOOD	USABLE	REPAIR	REPLACE	N/A	Comments	Estimated Cost		
								Parts	Labour	Total
Rust / Corrosion		X								
Sheet Metal		X								
Paint		X								
Seat / Seat Belt / Rotation		X								
Doors / Glass		X								
Lights		X								
Mirrors		X								
Cab Interior		X								
Periodic Maintenance		X								
PIPS Complete						X				
Parking Brake / Linkage / Lock						X	Not tested presumed working.			
Decals		X								
Operators Manual						X				
Pilot Shut Off / Neutral Lock		X								
Shields/Guards(Drive Shaft)		X								
Section Summary		X					Good condition. Machine looks good cosmetically.			

**INSTRUMENTS / CONTROLS**

	NEW	GOOD	USABLE	REPAIR	REPLACE	N/A	Comments	Estimated Cost		
								Parts	Labour	Total
Hour Meter: Original <input checked="" type="radio"/> Yes <input type="radio"/> No Operating <input checked="" type="radio"/> Yes <input type="radio"/> No		X								
Charging System		X								
Engine Oil Pressure Gauge		X								
Temp Gauges(Eng,Trans,Hyd)		X								
Switches (Key, MFWD, Propel, etc.)		X								
Neutral Start Circuit		X								
Alarms (Travel, Backup)						X				
Monitor / Indicator Circuits		X								
Air Restriction Indicator		X								
Section Summary		X					Good condition. Controls and gauges work properly.			

Stock Number: 459866

Model: 4375 Serial Number: 1T0437EDVNF429448

**COOLING SYSTEM CHECKS**

	NEW	GOOD	USABLE	REPAIR	REPLACE	N/A	Comments	Estimated Cost		
								Parts	Labour	Total
Coolant Level / Quality		X								
Coolant Operating Temperature		X								
Coolant Leaks		X								
Head Gasket Leakage		X								
Water Pump Check		X								
Fan Blades / Pulleys / Shrouds		X								
Fan Guard		X								
Belts / Hoses / Clamps		X								
Radiator / Oil Cooler Condition		X								
Radiator Mounts		X								
Air Conditioning System Check		X					A/C working properly.			
Section Summary		X					Good, no leaks or issues seen.			

**ENGINE**

Make	Size	Serial Number	Tier Rating	Type
John Deere	6.8L 173hp.	PE6068U105070	4	diesel

**ENGINE CHECKS**

	NEW	GOOD	USABLE	REPAIR	REPLACE	N/A	Comments	Estimated Cost		
								Parts	Labour	Total
Oil Level / Quality		X								
Oil Scanned? X Yes    O No		X								
Air Intake System Check		X								
Engine Start-Up		X					Starts easy and runs good.			
Engine RPM (Low Idle)		X								
Engine RPM (High Idle)		X								
Fuel Leaks		X								
Inj Pmp / Supply Pmp / Fuel Filter		X								
Oil Leaks		X								
Exhaust System		X								
Does Engine Miss		X								
Excs Smoke (Fuel / Oil / Coolant)		X								
Adequate Power		X								
Adequate Oil Pressure		X								
Speed Control Check / Linkage / AI		X					PSI hot (32-76)			
Abnormal Engine Noise		X								
TurboCharger Check		X								
BlowBy Check		X								
Compression Check (if Required)		X								
Loose / Worn Parts		X								
Section Summary		X					Starts easy and runs good. PSI hot (32-76)			

**TRANSMISSION CHECKS**

	NEW	GOOD	USABLE	REPAIR	REPLACE	N/A	Comments	Estimated Cost		
								Parts	Labour	Total
Oil Level / Quality						X				
Oil Scanned? <input type="radio"/> Yes <input checked="" type="radio"/> No						X				
Oil Leaks						X				
Flywheel Clutch / Dampners						X				
Torque Converter Stall / Lock Up						X				
Splitter Box						X				
Trans Oil Pres (Ctrl/Engagement)						X				
Gear Mesh (Manual Transmission)						X				
FNR Operation						X				
Rate of Shift Modulation						X				
Shifting Linkage Adjustments						X				
Clutch / Brake Slippage (Pwr Shft)						X				
Trk Pmp / Mtr Phase (Hydrostatic)						X				
High / Low Shifting Performance						X				
Inching Pedal						X				
Engine Pull Down						X				
PTO						X				
Abnormal Transmission Noise						X				
Section Summary						X	N/A			

**DIFFERENTIAL, BRAKES AND FINAL DRIVE CHECKS**

	NEW	GOOD	USABLE	REPAIR	REPLACE	N/A	Comments	Estimated Cost		
								Parts	Labour	Total
Oil Level / Quality						X				
Oil Scanned? <input type="radio"/> Yes <input checked="" type="radio"/> No						X				
Oil Leaks						X				
Drive Lines / U-Joints						X				
Axle Oscillation Joints						X				
Mounting Hardware						X				
Differential Gear Noise						X				
Diff Lock / Limited Slip Check						X				
Service Brake Operation / Leakage		X								
Steering Clutch / Brake Operation						X				
Final Drives						X				
Section Summary		X					Not tested, presumed service & park brakes operate properly.			

**HYDRAULIC SYSTEM CHECKS**

	NEW	GOOD	USABLE	REPAIR	REPLACE	N/A	Comments	Estimated Cost		
								Parts	Labour	Total
Oil Level / Quality		X								
Oil Scanned? X Yes    O No		X								
Oil Leaks		X					No leaks observed.			
Oil Operating Temperature		X								
Hydraulic Pump Perf / Cycle Times		X								
Abnormal Pump Noise		X								
Sys Chk / Related Cyl / Pvt Jnts		X					Pins good. All pins 1/16" of wear or less. No sig wear seen.			
Return to Dig						X				
Hoses / Lines		X								
Swing		X								
Propel/FNR						X				
Axle Suspension / Accumulator						X				
Winch / Fairleads						X				
Aux Hyd / Valve		X					Slasher hydraulics.			
Control Valves / Relief Valves		X								
Steering Operational Check						X				
Steering Priority Vlv Opr Check						X				
Section Summary		X					Good condition. Machine is dry, everything operates properly			

**CHASSIS AND FRAME CHECKS**

	NEW	GOOD	USABLE	REPAIR	REPLACE	N/A	Comments	Estimated Cost		
								Parts	Labour	Total
Main Frame		X					Good condition, no cracks or plates seen.			
Equipment / Engine Frame		X								
Axles / Tie Rods						X				
Cab / ROPS Frame		X								
Swing Frame		X					Turntable bearing is good. No wear seen.			
Frame Articulation Joints						X				
Boom (Loader / Backhoe / Excvttr)		X					Boom pins good. Minimal wear only all less that 1/16".			
Dipperstick / Bucket Links						X				
Dozer Frame/C-Frame						X				
Grapple Frame		X								
Stabilizer / Pads		X								
Section Summary		X					Pins are good minimal wear only. Good cond. structurally.			

**TYRES/RIMS**

	Tire size	Tire ply	% remaining	NEW	GOOD	USABLE	REPAIR	REPLACE	N/A	Comments	Estimated Cost		
											Parts	Labour	Total
Front: Right									X				
Front: Left									X				
Drive: Right									X				
Drive: Left									X				
Trailer: Right	11R22.5				X								
Trailer: Left	11R22.5				X								
Section Summary					X					Tires are look good.			

Stock Number: 459866

Model: 4375 Serial Number: 1T0437EDVNF429448

**FORESTRY HEADS & ATTACHMENTS**

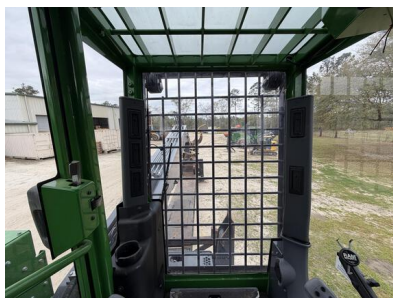
	NEW	GOOD	USABLE	REPAIR	REPLACE	N/A	Comments	Estimated Cost		
								Parts	Labour	Total
Feed Rollers						X				
Knives		X					Delimber is in good condition overall. Knives & arms good.			
Encoders/Wiring						X				
Counting System						X				
Saw Bar/Chain		X								
Frame/Arm Condition		X								
Independent Wheel						X				
Topping Saw		X					Topping saw operates properly.			
Saw Main Frame		X								
Arms/Cylinders		X								
Saw Main Bearing						X				
Saw Drive Motor		X								
Saw Disc/Teeth		X								
Rotation		X								
Section Summary		X					Grapple and Delimber in good condition. No issues seen.			

**ADDITIONAL PHOTOS**



Stock Number: 459866

Model: 4375 Serial Number: 1T0437EDVNF429448



Stock Number: 459866

Model: 437E Serial Number: 1T0437EDVNF429448

